



Part of Absolent Air Care Group



# INSTALLATION MANUAL

# F Monitor Essential

The F Monitor Essential is a monitoring device that measures airflow to indicate when the Filtermist unit needs servicing, or if there are any blockages in the extraction system which may be affecting performance. The monitor is powered by two AA batteries (not included), so no electrical connection is required.

The F Monitor Essential uses a traffic light system of coloured LED lights to show the operating status of the Filtermist unit. A solid or flashing green light on airflow will show that airflow is adequate (above 80%), a solid or flashing amber airflow light means airflow is between 50%-80% - time to arrange a service inspection. Red indicates that immediate action is required as the airflow is below 50% of the original parameter set.

This manual describes how to install the F Monitor Essential. Please read these instructions fully before commencing work.

1. F Monitor Essential



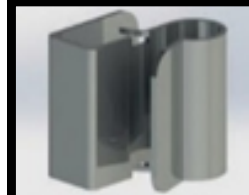
2. Nozzle



3. 3 metre tube x2



4. Motor clip



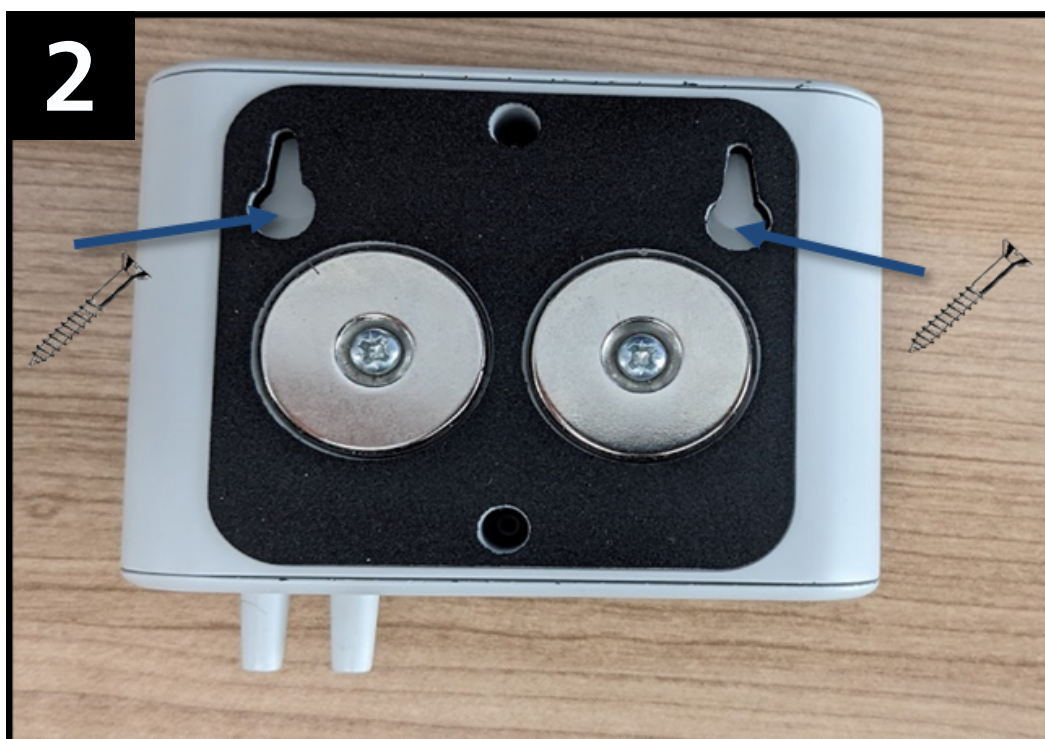
5. 3 metre conduit



# F Monitor Essential

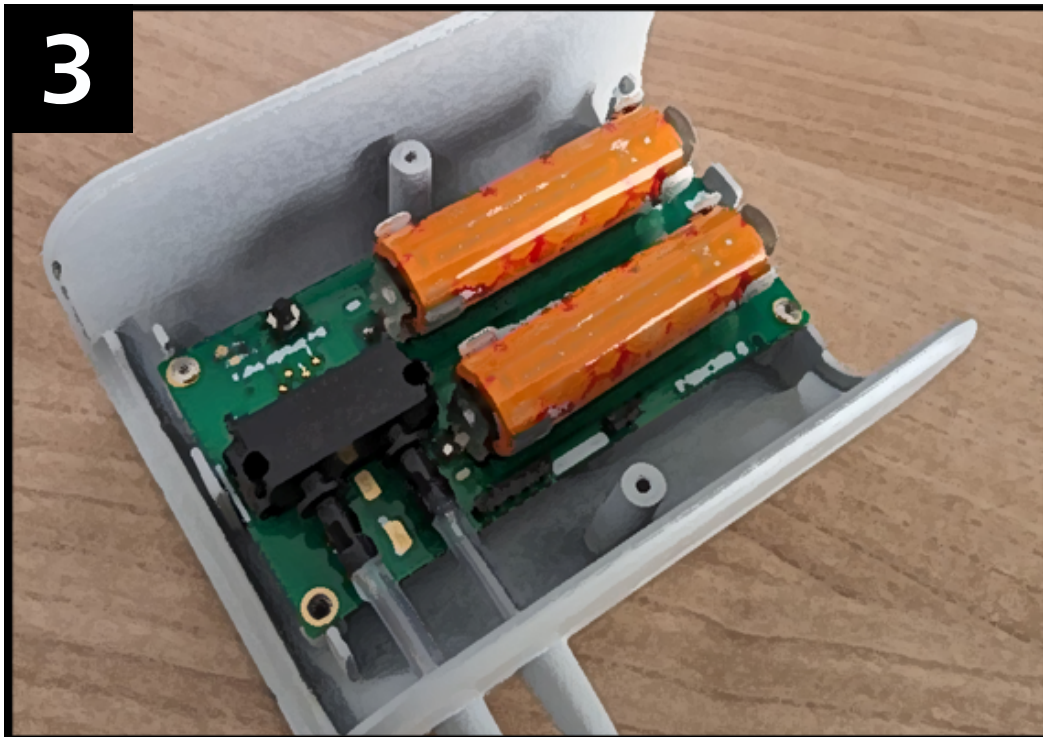


Two strong magnets enable you to mount the monitor.



Alternatively fix two screws at 60mm centres to a flat vertical surface and hook the monitor onto the screws. 3.5mm max diameter on the thread, and 8.5mm max diameter head.

# F Monitor Essential



Power to the F Monitor Essential is supplied from two AA batteries (not included).  
Note: These should be replaced when the battery light indicates. Fit these as per the instructions on the board.



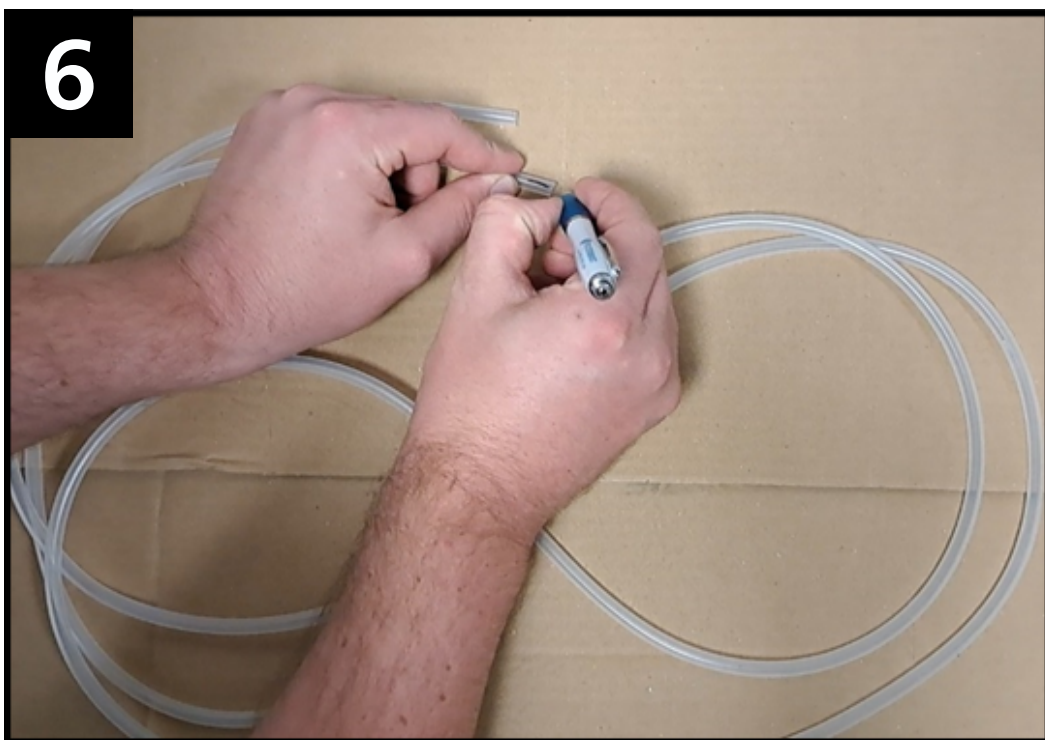
Both airflow and battery lights will flash twice when starting. After this, a continuous blue flash from the airflow light will occur. This will show that the unit is uncalibrated.



# F Monitor Essential



To connect the F Monitor Essential to the Filtermist unit, you first need to prepare the Filtermist unit: fit the black nozzle into the hole in the diaphragm.



Mark both ends of one of the hoses with a pen.

# F Monitor Essential



To prepare the pressure sensing hoses, feed the two hoses through the conduit.



Connect the hose marked with pen to the nozzle on the diaphragm. Then connect to the left hand nozzle on the bottom of the monitor.

# F Monitor Essential



Connect the other hose to the motor using the motor clip with the hose pointing up. Then fix to the right hand nozzle on the bottom of the monitor.

**IMPORTANT – ensure the hoses are not pinched or trapped as this will affect the function of the F Monitor Essential.**

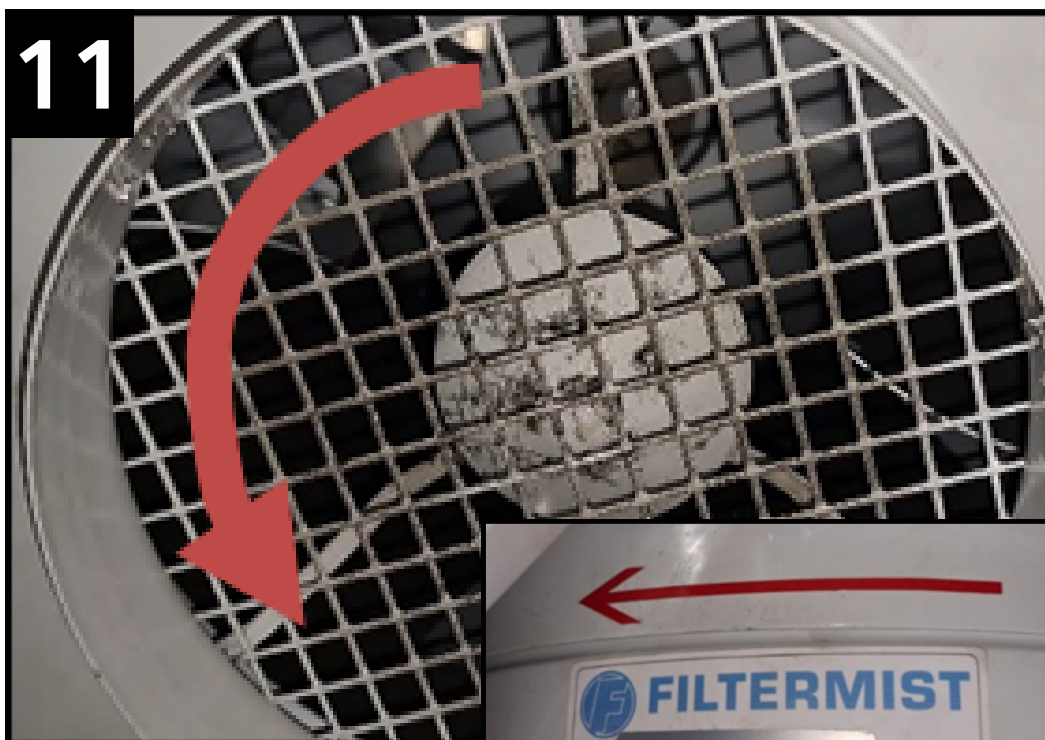


Feed the conduit through the afterfilter seal (if afterfilter is present) and secure the afterfilter into position using the clips.

# F Monitor Essential

**IMPORTANT – When fitting the F Monitor Essential to units already installed it is important that the unit is serviced and that the ducting and extraction point are clean. This will ensure the monitor is recording the maximum airflow after installation.**

**Failure to carry out this service may result in incorrect readings from the monitor.**



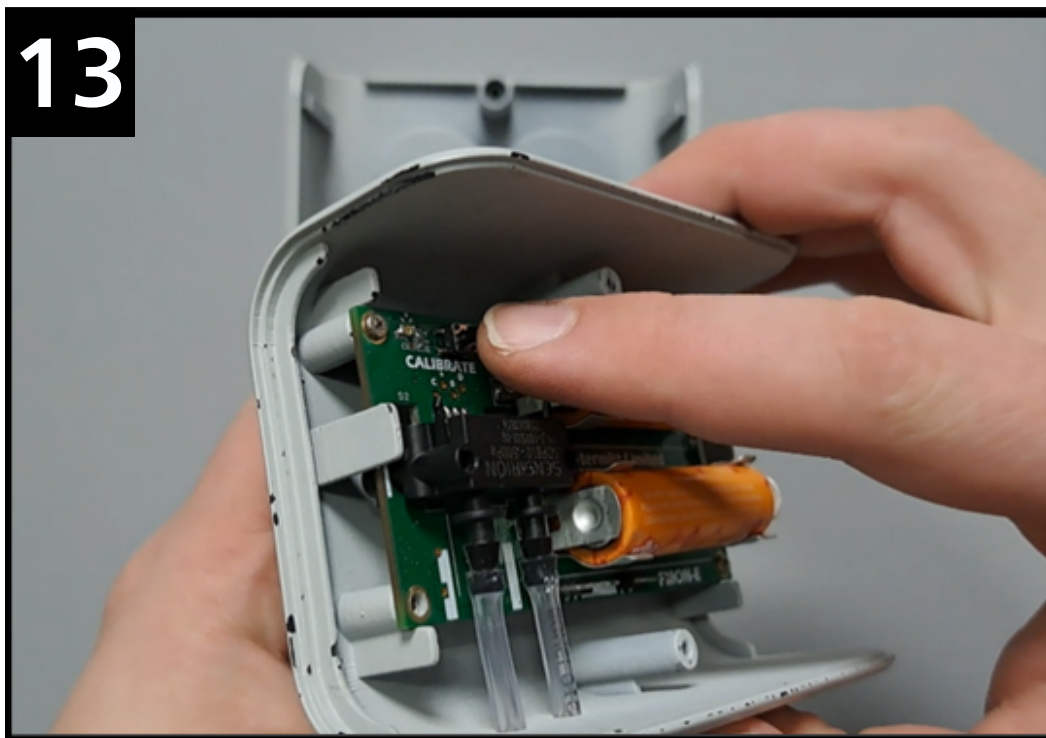
After all parts are fitted, you need to calibrate the monitor. To do this, firstly turn on the Filtermist unit, making sure it is running normally and in the correct direction. Follow the red arrow on the Filtermist unit to check this.



# F Monitor Essential



Remove the two screws on the back of the F Monitor Essential. Then remove the back cover, insert the batteries, and a double white flash on the airflow and battery lights will occur. A blue light will then flash on the front airflow light. Check that the hoses are connected inside the monitor.



When the hoses are connected and the Filtermist unit is turned on and rotating in the correct direction, press the calibrate button on the circuit board. The monitor will calibrate for the first 10 seconds, and a solid green light will stay on for two minutes as the airflow is dynamically sensed (if a blue light is flashing, the hoses may have been connected the wrong way round).

# F Monitor Essential



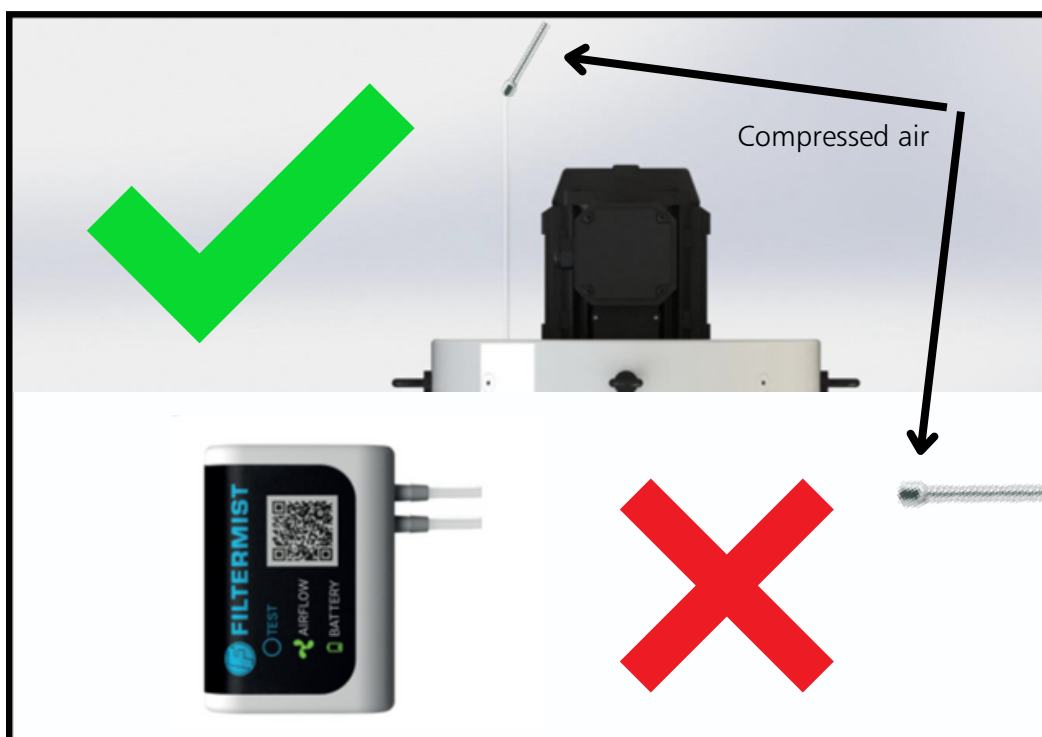
Re-fit the back cover. After two minutes the green light will revert to a flash and sense every 10 minutes.

# F Monitor Essential

## Troubleshooting

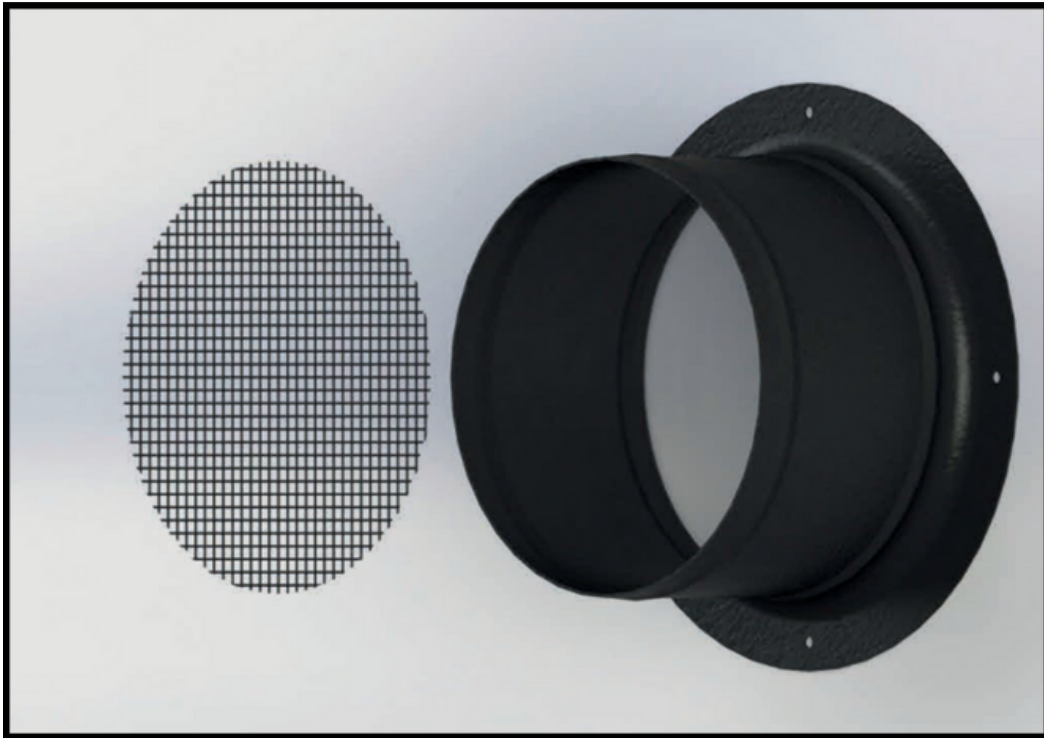


If the light turns red, check for a blockage in the air stream. See steps below.

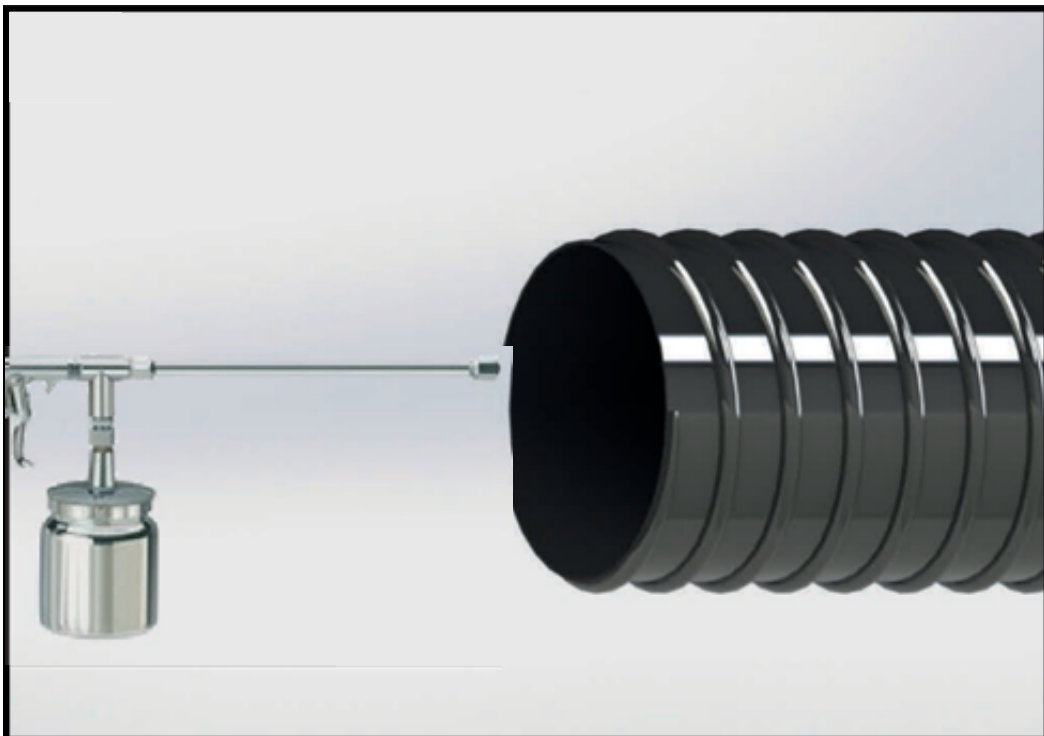


Remove the hoses from the sensor and blow compressed air down the hose towards the nozzle, not towards the F Monitor Essential.

# F Monitor Essential



Make sure the wire mesh has no blockages.



Make sure the ducting has no blockages.



# F Monitor Essential



Make sure the afterfilter is not blocked by removing it from the Filtermist unit and checking.





If a blue light is flashing, this means the monitor is uncalibrated. If you have attempted to calibrate, then it did not recognise the airflow. You will need to recalibrate.

These set up instructions can also be viewed as a film.

Scan the QR Code on the F Monitor Essential or go to [www.filtermist.com/FMonitorEssential](http://www.filtermist.com/FMonitorEssential) to view.

# F Monitor Essential

<b>EU DECLARATION OF CONFORMITY</b>		 <b>FILTERMIST</b>	
<b>Manufacturer's name:</b>	Filtermist Limited	<b>Equipment covered by this declaration:</b>	
<b>Full address:</b>	Telford 54 Business Park, Nedge Hill, Telford Shropshire TF3 3AL	Description:	Monitoring device for Filtermist units
		Function:	To be fitted to AX, S & FX Series Filtermist units to monitor performance
		Model:	F Monitor Essential
		Serial No.:	See unit
The equipment conforms to all the requirements of the Low Voltage Directory 2014/35/EU.			
<b>The machinery also conforms to the following Directives:</b>	EMC Directive 2014/30/EC RoHS Directive 2011/65/EC		
<b>The following standards have been used:</b>	EN 61326-1:2021; EN 61010-1:2010 +A1:2019		
The relevant authorised person undertakes to transmit, in response to a reasoned request by the national authorities, relevant information on the machinery. This information will be transmitted by: (email, post)			
<b>Person authorised to make this declaration:</b>	Name:	James Stansfield	
	Position in company:	Group CEO	
	Signature:		
	Place of Declaration:	Filtermist Limited, Telford 54 Business Park, Nedge Hill, Telford, Shropshire, TF3 3AL, England	
	Date of Declaration:	1 January 2024	

# F Monitor Essential

## UKCA DECLARATION OF CONFORMITY


**FILTERMIST**

<b>Manufacturer's name:</b>	Filtermist Limited		<b>Equipment covered by this declaration:</b>	
<b>Full address:</b>	Telford 54 Business Park, Nedge Hill, Telford Shropshire TF3 3AL	Description:	Monitoring device for Filtermist units	
		Function:	To be fitted to AX, S & FX Series Filtermist units to monitor performance	
		Model:	F Monitor Essential	
		Serial No.:	See unit	
The equipment conforms to all the requirements of the Electrical Equipment (Safety) Regulations 2016				
<b>The machinery also conforms to the following Directives:</b>	Electromagnetic Compatibility Regulations 2016 The Restriction of the Use of Certain Hazardous Substances in Electrical and Electronic Equipment Regulations 2012			
<b>The following standards have been used:</b>	BS EN 61326-1:2021; BS EN 61010-1:2010 +A1:2019			
The relevant authorised person undertakes to transmit, in response to a reasoned request by the national authorities, relevant information on the machinery. This information will be transmitted by: (email, post)				
<b>Person authorised to make this declaration:</b>	Name:	James Stansfield		
	Position in company:	Group CEO		
	Signature:			
	Place of Declaration:	Filtermist Limited, Telford 54 Business Park, Nedge Hill, Telford, Shropshire, TF3 3AL, England		
	Date of Declaration:	1st January 2024		

# F Monitor Essential



**FILTERMIST**

Part of Absolent  
Air Care Group

Filtermist Limited

Nedge Hill

Telford

TF3 3AL

England

Tel: +44 (0)1952 290500

Email: [sales@filtermist.com](mailto:sales@filtermist.com)

[www.filtermist.com](http://www.filtermist.com)

Document no. 20-218-10-091

REV January 2024

All text, images and photographs Copyright Filtermist 2023